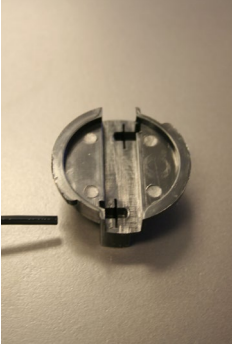
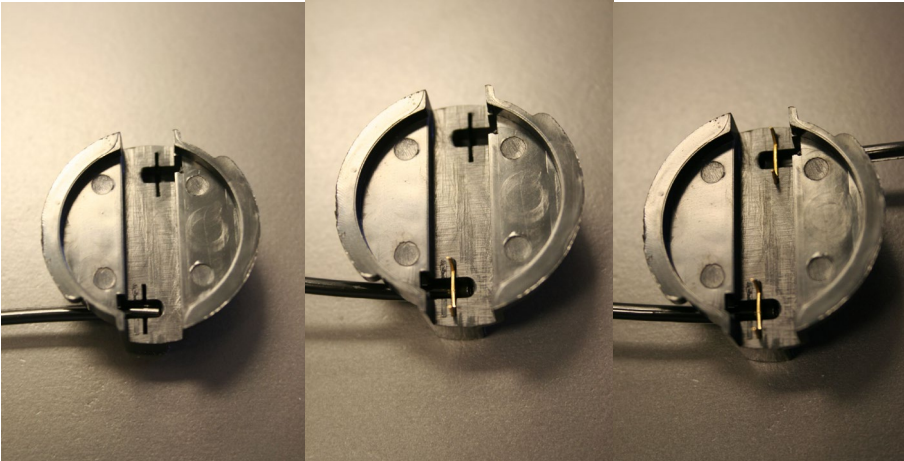


GBT5070 Quick Connector Installation Instructions

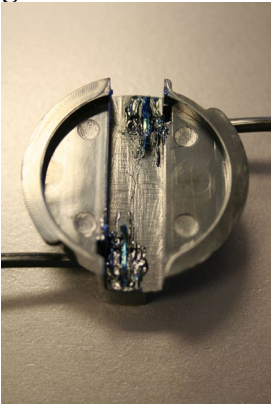
1. Split the conductors in half about 4 inches on your fixture wire and insert the wires into the slots on the connector. Leave the PVC jacket on the wires. Do not strip them.



2. Insert the blunt end of the brass piercing pin into the slot and push down into the wire with a small blunt object you can fit between the two points. Make sure the wire is fully inserted and the piercing pin is pushed as far into the wire as it will go.



3. It is always a good idea to saturate the area where the splice and piercing pins are with Marine axle grease. This can be found at any Auto parts store in the axle grease section. This will eliminate future corrosion and connection problems.



4. Insert your 12 Awg landscape lighting cable into the slot and press straight down on the piercing pins. Make sure the pins have pierced straight into the cable where the copper is located to insure good contact. If the landscape lighting cable is inserted at an angle the brass pins may bend. If this happens straighten the brass pins out with a pair of needle nose pliers and re-insert the cable. Lock the cap back on and test your connection.

